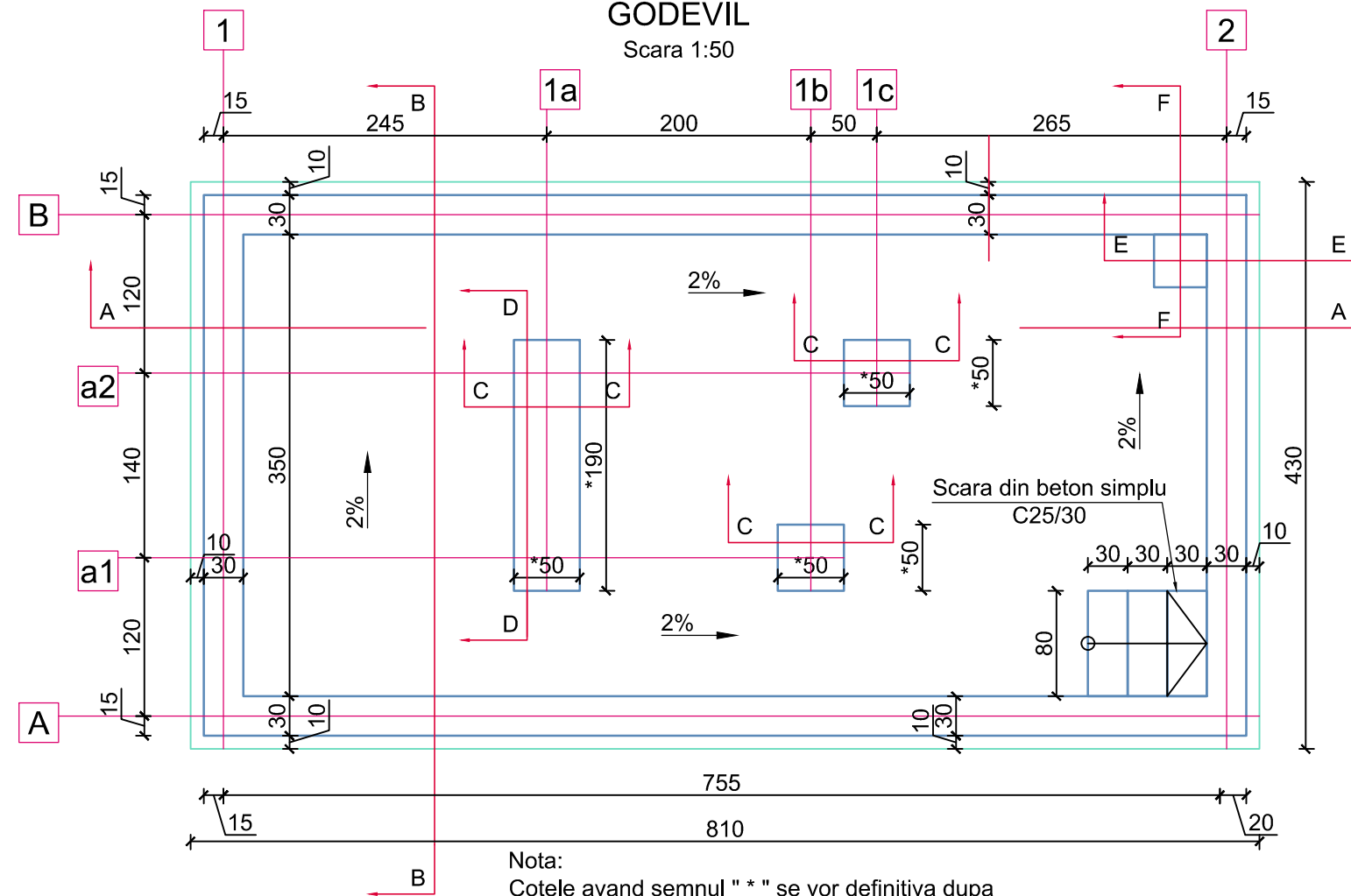


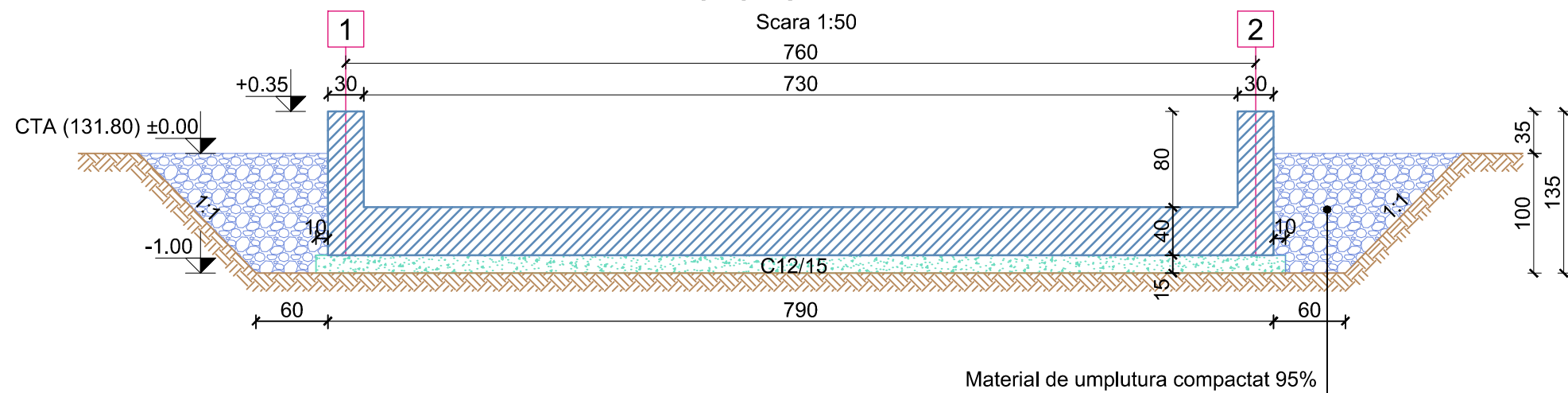
GODEVIL

Scara 1:50

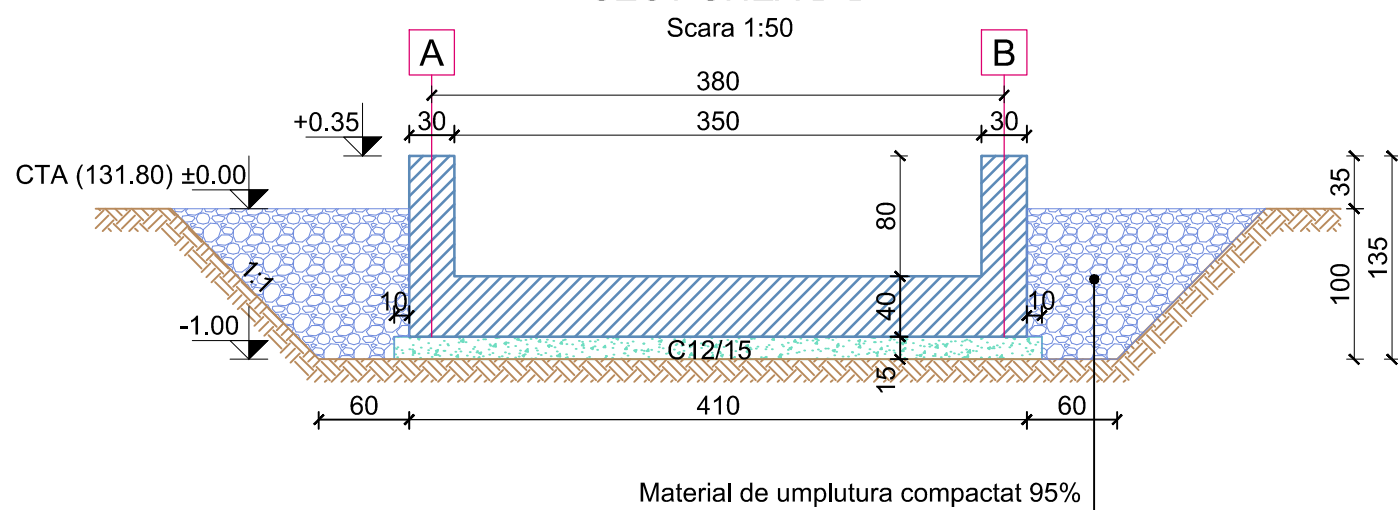


Nota:
Cotele avand semnul " * " se vor definitiva dupa
masurarea suportilor conductei existente.

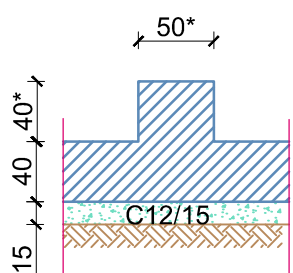
Scara 1:50



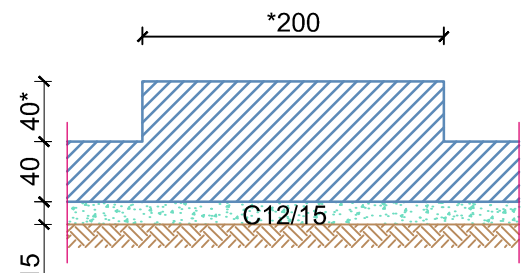
Scara 1:50



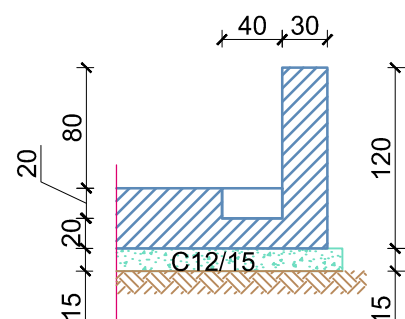
Scara 1:50



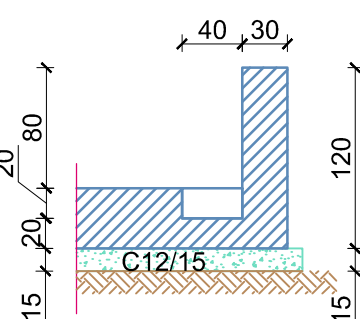
Scara 1:50



Scara 1:50



Scara 1:50



- LISTA DE MATERIALE:**

- BETON SIMPLU : 5.3m³ - C12/15
- BETON ARMAT: 20.0m³ - C25/30
- ARMATURA: 2147 kg
- PIESE METALICE: 444kg -S235J2
- COFRAJ: 50.0m²
- SAPATURA: 50.0m³
- PROFIL DE IMPERMEABILIZARE: 25.0m



MATERIALE:

- BETON
 - BETON ARMAT- C25/30 - XC4+XF1;
 - CI 0.20;
 - CEM II A-S 32.5 N sau R;
 - S3;
 - GRANULATIE AGREGATE - Dmax. 16mm
 - BETON SIMPLU - C12/15 - X0;
 - CI 1.0;
 - CEM II A-S 32.5 N sau R
 - S1-S3
 - GRANULATIE AGREGATE - Dmax. 22mm

- ARMATURA : OB37; PC52
- OTEL: S235J2

NOTA :

- CATEGORIA DE IMPORTANTA "C" conf. HG 766/1997
- CLASA DE IMPORTANTA "III" conform P100-1/2013;
- CONSTRUCTIA ESTE AMPLASATA IN ZONA SEISMICA CU ACCELERATIA TERENULUI PENTRU PROIECTARE $a_g = 0.30g$ SI PERIODA DE CONTROL(DE COLT) $T_c = 1.6$ s - conform P100 - 1/2013;
- INAINTE DE INCEPEREA SAPATURILOR PENTRU FUNDATII SE VOR DEZAFECTA SAU DEVA EVENTUALELE RELETE DE INSTALATII EXISTENTE IN ZONA;
- DOMENIUL DE VERIFICARE A1;
- DIAMETRE ARMATURI : IN MM;
- DIMENSIUNI / COTE DESEN : IN CM;
- VALOAREA MINIMA A ACOPERIRII CU BETON A ARMATURII ESTE DE 5CM;
- TURNAREA BETONULUI IN FUNDATIE NU SE VA FACE PANA CAND TOATE ELEMENTELE INGLOBATE NU VOR FI MONTATE;
- PENTRU ASIGURAREA IMPERMEABILITATII SI CONTINUITATII IN PERETELE CUVEI SE VA MONTA UN PROFIL DE IMPERMEABILIZARE DIN PVC TIP SIKA SAU SIMILAR.

ATENȚIE !



- SE RECOMANDA CA EXCAVATIILE GROSIERE SA SE EXECUTE IN RITM ALERT , PE CAT POSIBIL INTR-O PERIOADA LIPSITA DE PRECIPITATII, IAR LUCRARILE SA FIE SUPRAVEGHEATE DE GEOTEHNICIAN;
- ULTIMUL STRAT DE PE FUNDUL SAPATURII (CIRCA 20 CM) VA FI INDEPARTAT INAINTE DE TURNAREA STRATULUI DE EGALIZARE DIN BETON SIMPLU.

LEGENDA:

- TOC = COTA SUPERIOARA BETON ARMAT;
- CTA = COTA TEREN AMENAJAT;

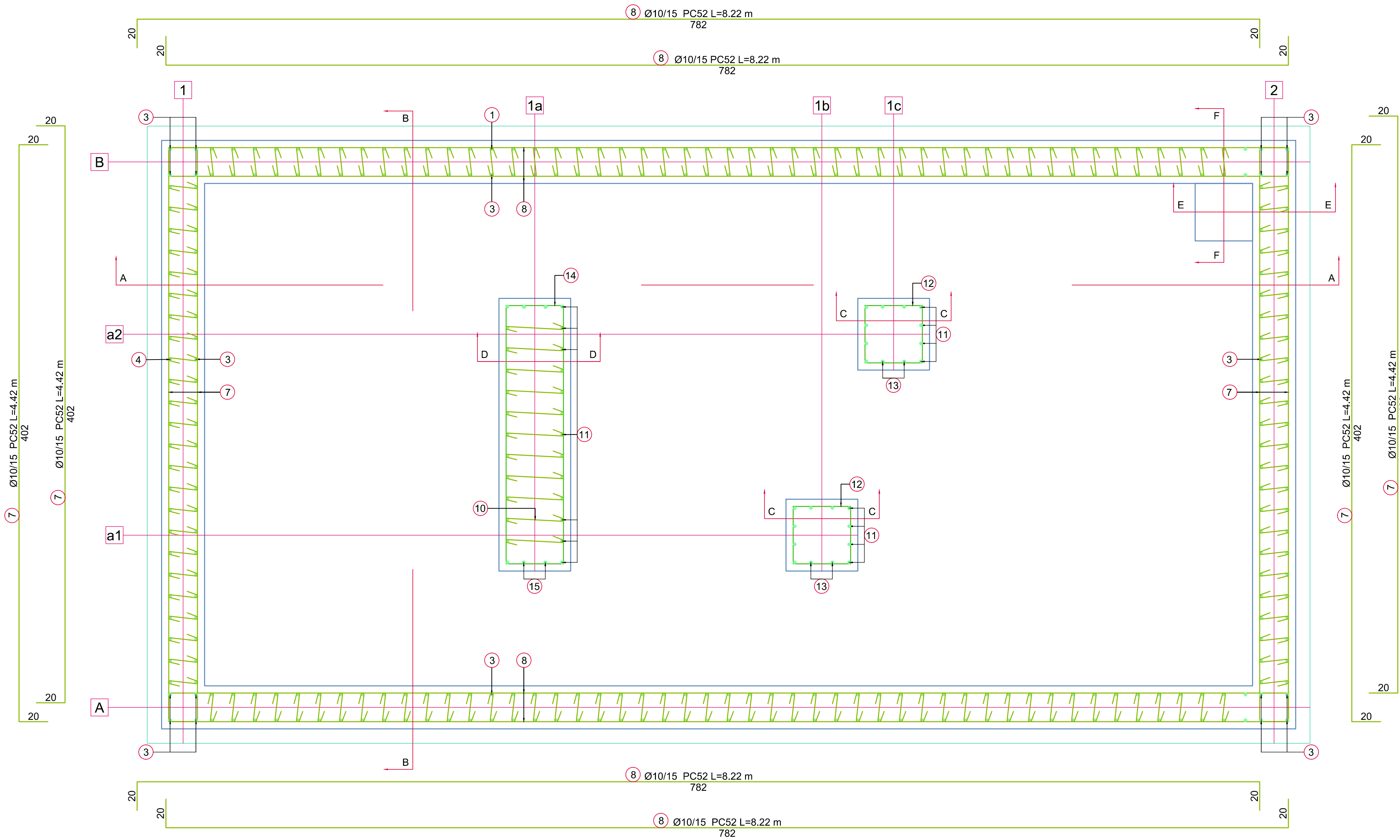
DOCUMENTE DE REFERINTA:

- **B.031.007-CS-LP-207 Plan General Amplasare - Civil**

02	Emis pentru Construire	03.2020	Ing.R. Brutaru	Ing.M.Voicu		
01	Emis pentru construire	03.2019	Ing. R. Brutaru	Ing. M. Scurtu		
00	Prima revizie	12.2018	Ing.R. Brutaru	Ing.M. Scurtu		
Rev.	Denumirea modificarii	Data	Intocmit	Verificat		
 <div>RIA ENGINEERING & CONSULTING 107065 BERTEA, SAT BERTEA, B12 100015, PLOIESTI, IL CARAGIALE 49 TELEFON: +40 244 471 659 Email: office@riaengineering.ro</div>		 <div>CONPET S.A. Str. Anul 1848, nr. 1-3, 100559, PLOIESTI,</div>		Nr. proiect: B.031.007	Desen - Nr.: CS-PLN-215	Rev. 02
Beneficiar:		CONPET S.A.		Specialitate Doc.:	Format	
Instalatie:		STATIE DE POMPARE POTLOGI		CIVIL	A2-o	
Scara:		Denumire desen				Faza
1 : 50		Plan Cuva de Retentie Gara de Godevil, Pag. 1/4				PT+DE

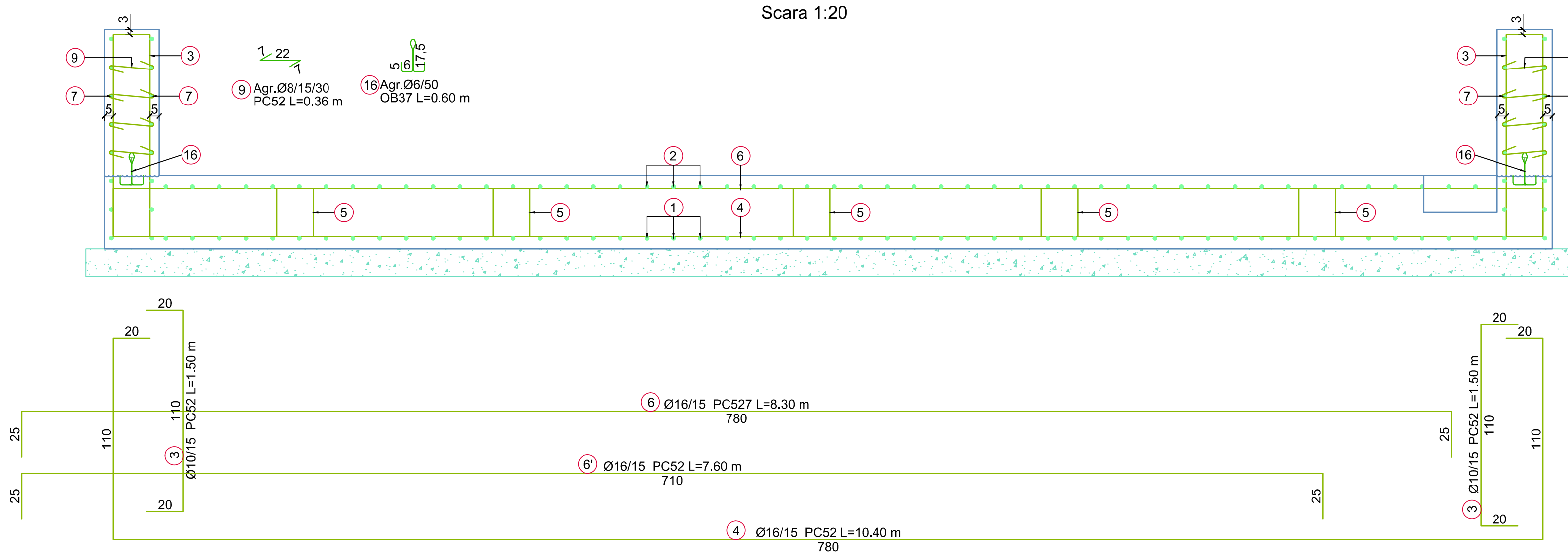
PLAN ARMARE CUA DE RETENTIE GARA DE GODEVIL

Scara 1:20



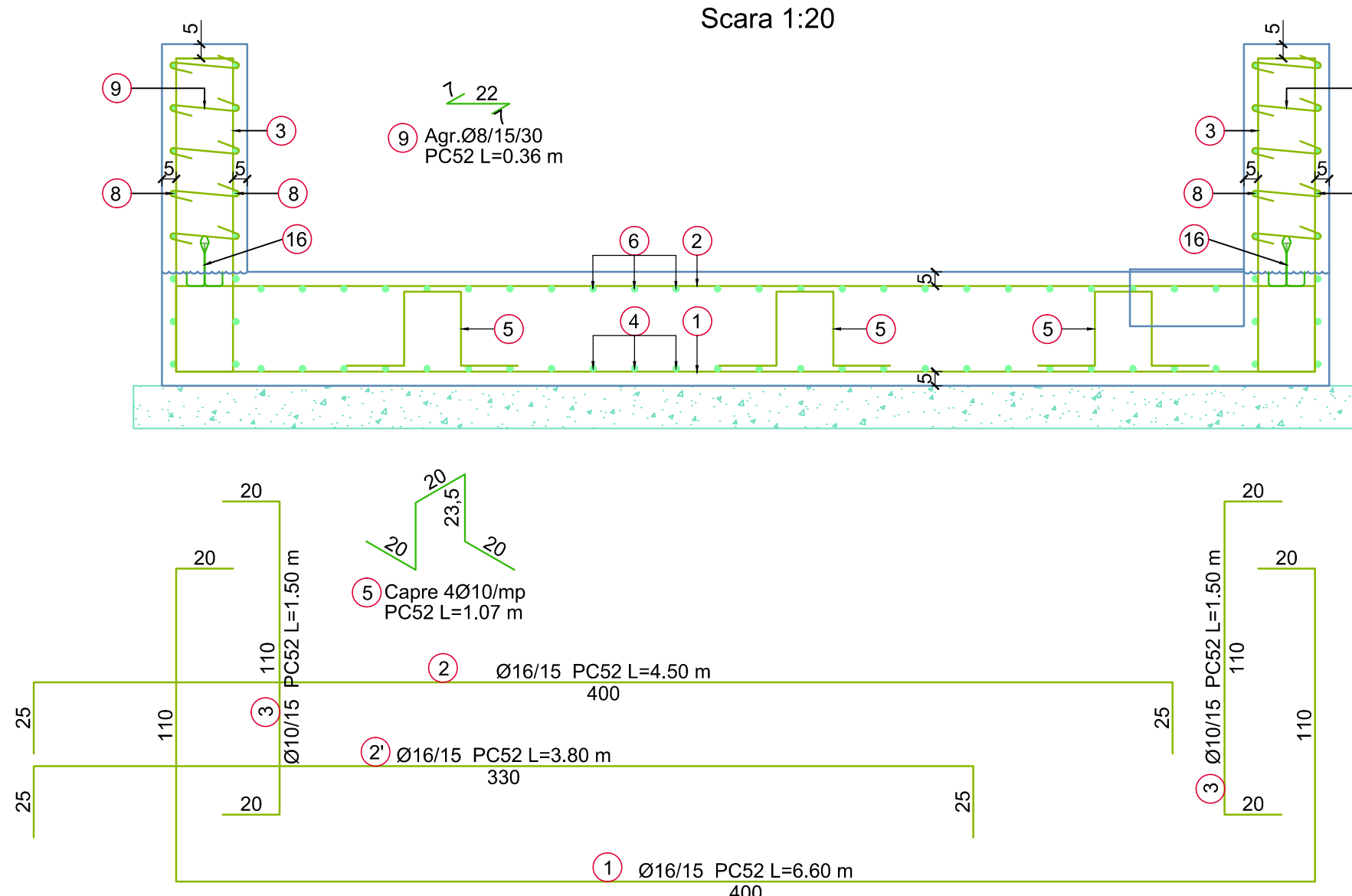
SECTIUNE A-A

Scara 1:20



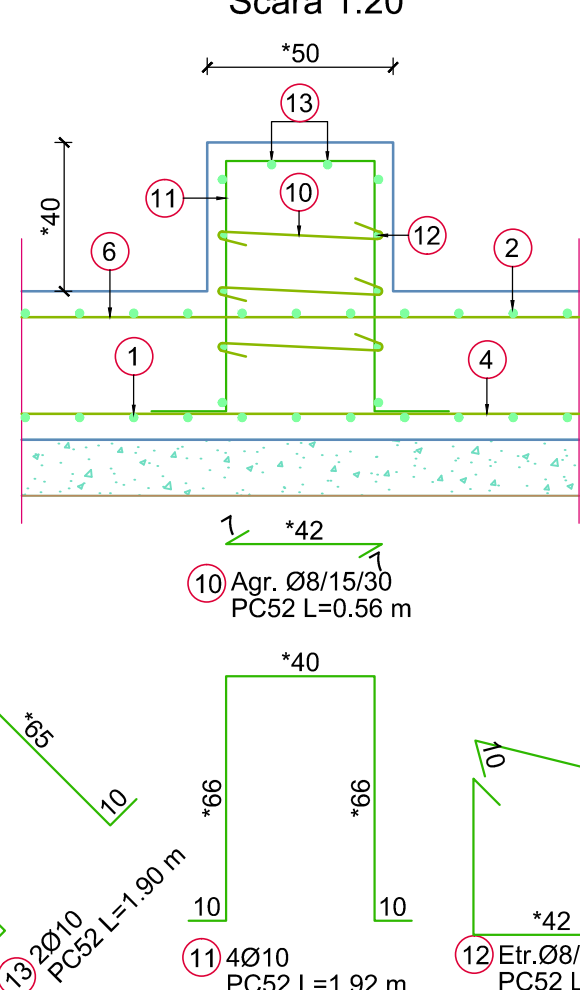
SECTIUNE B-B

Scara 1:20



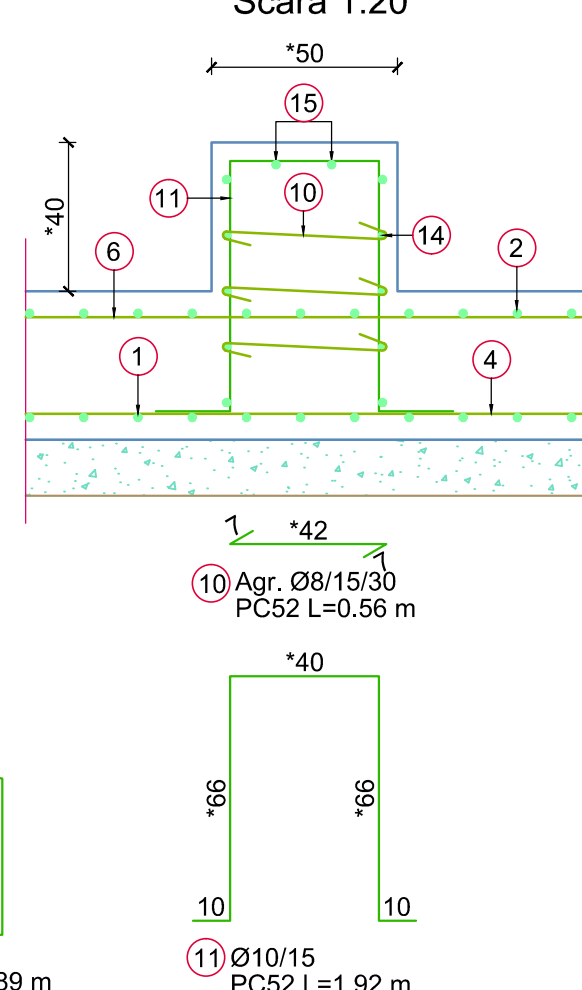
SECTIUNEA C-C

Scara 1:20



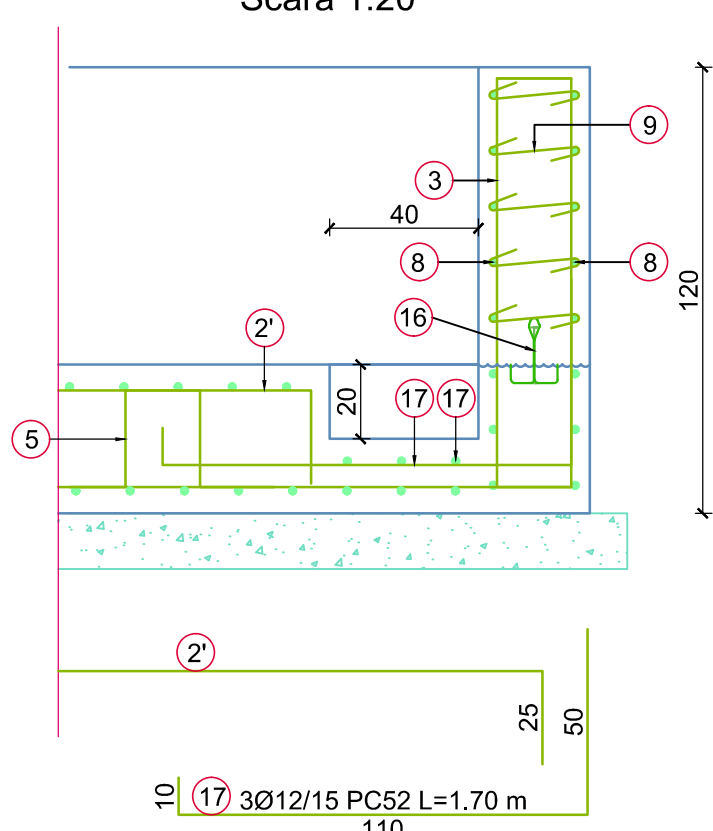
SECTIUNEA D-D

Scara 1:20



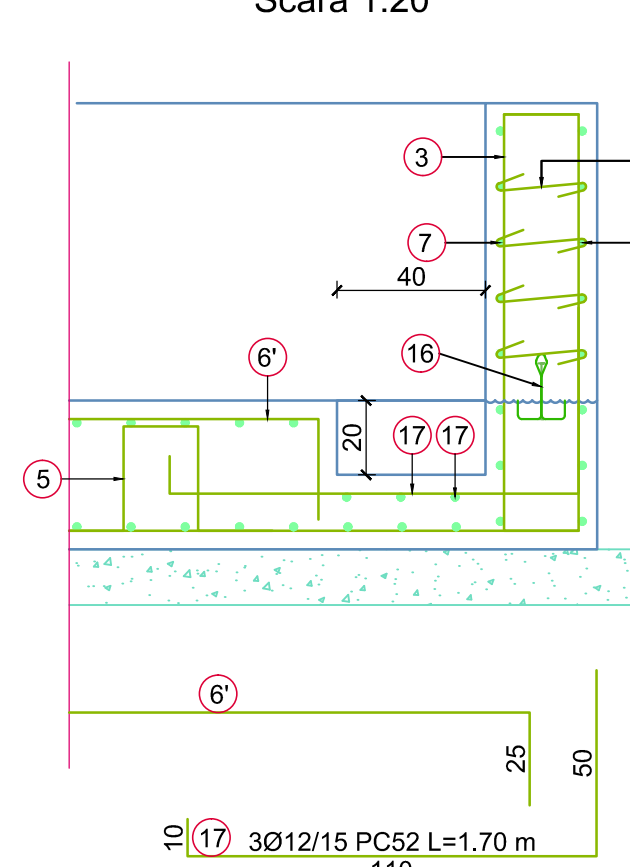
SECTIUNEA F-F

Scara 1:20



SECTIUNEA E-E

Scara 1:20



MATERIALE:

- BETON:
- BETON ARMAT - C25/30 - XC4+XF1;
- CI 0.20;
- CEM II A-S 32.5 N sau R;
- S3;
- GRANULATIE AGREGATE - Dmax. 16mm
- BETON SIMPLU - C12/15 - X0;
- CI 1.0;
- CEM II A-S 32.5 N sau R
- S1-S3
- GRANULATIE AGREGATE - Dmax. 22mm

- ARMATURA : OB37; PC52
- OTEL: S235J2

NOTA :

- CATEGORIA DE IMPORTANTA "C" conf. HG 766/1997
- CLASA DE IMPORTANTA "III" conform P100-1/2013;
- CONSTRUCTIA ESTE AMPLASATA IN ZONA SEISMICA CU ACCELERATIA TERENULUI PENTRU PROIECTARE $a_g = 0.30g$ SI PERIOADA DE CONTROL(DE COLT) $T_c = 1.6$ s - conform P100 - 1/2013;
- INAINTE DE INCEPEREA SAPATURILOR PENTRU FUNDATII SE VOR DEZAFECTA SAU DEZVIA EVENTUALELE REELE DE INSTALATII EXISTENTE IN ZONA;
- DOMENIUL DE VERIFICARE A1;
- DIAMETRE ARMATURII : IN MM;
- DIMENSIUNI / COTE DESEN : IN CM;
- VALOAREA MINIMA A ACOPERIRII CU BETON A ARMATURII ESTE DE 5CM;
- TURNAREA BETONULUI IN FUNDATIE NU SE VA FACE PANA CAND TOATE ELEMENTELE INGLOBATE NU VOR FI MONTATE;
- PENTRU ASIGURAREA IMPERMEABILITATII SI CONTINUITATII IN PERETELE CUVEI SE VA MONTA UN PROFIL DE IMPERMEABILIZARE DIN PVC TIP SIKA SAU SIMILAR.

ATENTIE !

- SE RECOMANDA CA EXCAVATIILE GROSIERE SA SE EXECUTE IN RITM ALERT, PE CAT POSIBIL INTR-O PERIOADA LIPSITA DE PRECIPITATII, IAR LUCRARILE SA FIE SUPRAVEGHEATE DE GEOTEHNICIAN;
- ULTIMUL STRAT DE PE FUNDUL SAPATURII (CIRCA 20 CM) VA FI INDEPARTAT INAINTE DE TURNAREA STRATULUI DE EGALIZARE DIN BETON SIMPLU.

LEGENDA:

- TOC = COTA SUPERIOARA BETON ARMAT;
- CTA = COTA TEREN AMENAJAT;

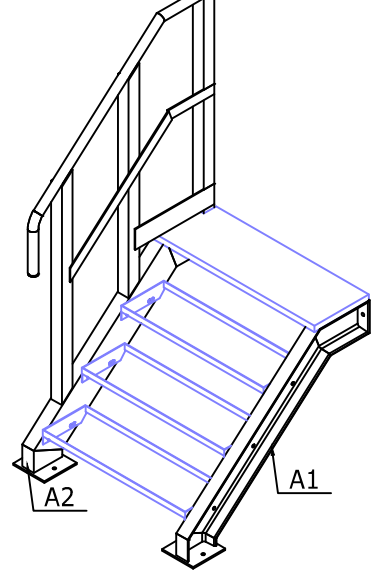
DOCUMENTE DE REFERINTA:

- B.031.007-CS-LP-207_Plan General Amplasare - Civil

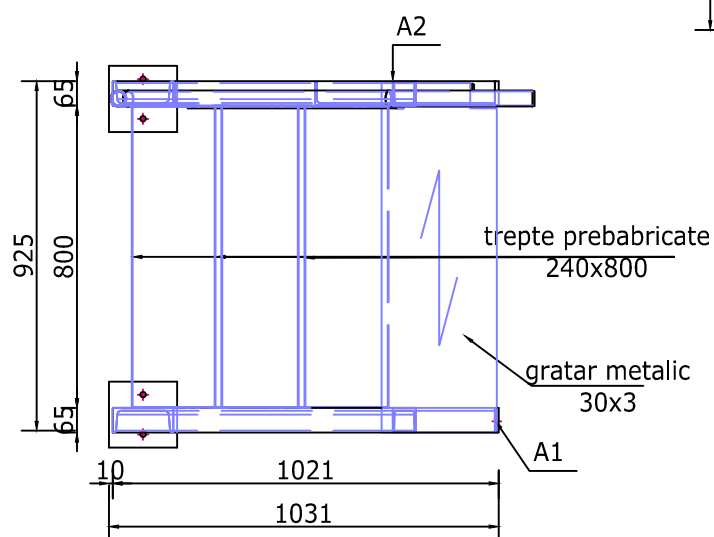
EXTRAS ARMARE										
Marca	Diametru (mm)	Lungime (m)	Bucati	Lungimi totale						
				OB37		PC52				
				Ø6	Ø8	Ø10	Ø12	Ø16		
1	16	6.6	49						323.4	
2	16	4.5	46						207	
2'	16	3.8	3						11.4	
3	10	1.5	162			243				
4	16	10.4	24						249.6	
5	10	1.07	100			107				
6	16	8.3	21						174.3	
6'	16	7.6	3						22.8	
7	10	4.42	32			141.4				
8	10	8.22	32			263				
9	8	0.35	360		126					
10	8	0.56	26		14.56					
11	10	1.92	21			40.32				
12	8	1.89	10		18.9					
13	10	1.9	4			7.6				
14	8	4.68	5		23.4					
15	10	3.5	2			7				
16	6	0.6	50	30						
17	12	1.7	6					10.2		
Lungime Ø (m)				30	182.86	809.4	10.2	988.5		
Greutate pe metru liniar (kg/m)				0.222	0.395	0.617	0.888	1.578		
Greutate Ø (kg)				6.66	72.2297	499.4	9.058	1560		
Greutate TOTALA (kg)								2147		

02	Emis pentru Construire	03.2020	Ing.R. Brutaru	Ing.M.Voicu
01	Emis pentru construire	03.2019	Ing. R. Brutaru	Ing. M. Scurtu
00	Prima revizie	12.2018	Ing.R. Brutaru	Ing.M. Scurtu
Rev.	Denumirea modificarii	Data	Intocmit	Verificat
R&A ENGINEERING & CONSULTING UTIU BISTITA, SAT BISTITA, R12 100115 PLOESTI, IL CARAGALE 40 TELEFON : +40 344 671 650 e-mail: office@raeengineering.ro		Nr. proiect: B.031.007		Desen - Nr.: CS-PLN-215
Beneficiar: CONPET S.A.		Specialitate Doc.: CIVIL		Rev. 02
Instalatie: STATIE DE POMPARE POTLOGI		Format 1.25-A1		Faza
Scara: Denumire desen		PT+DE		
1 : 20		Plan Cua de Retentie Gara de Godevil, Pag.2/4		

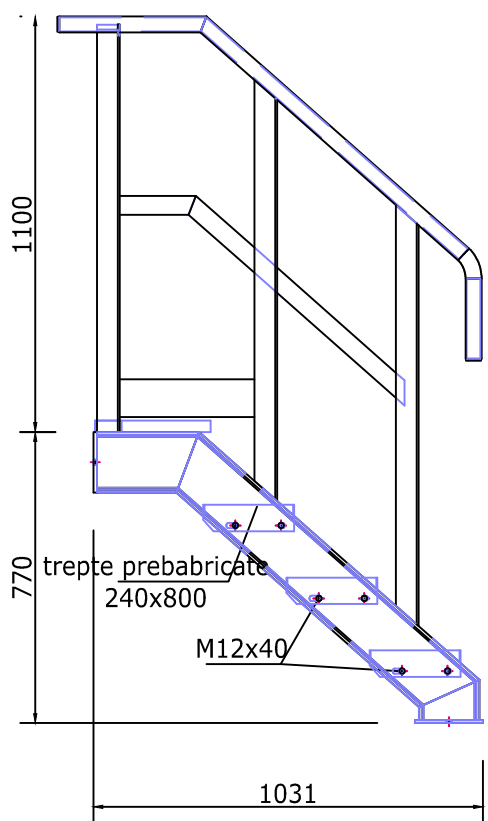
Scara acces cuva
-izometrie-



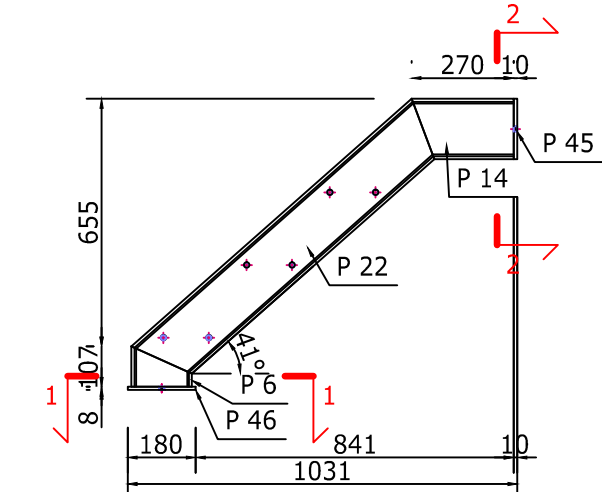
Scara acces cuva - vedere de sus
scara 1:20



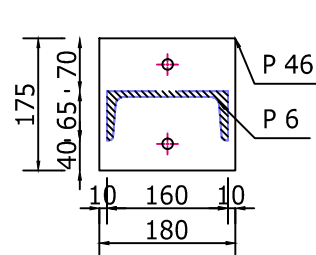
Scara acces cuva -vedere laterala
scara 1:20



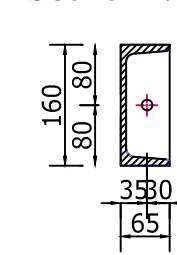
Absamblul A1 - vedere laterala
scara 1:20



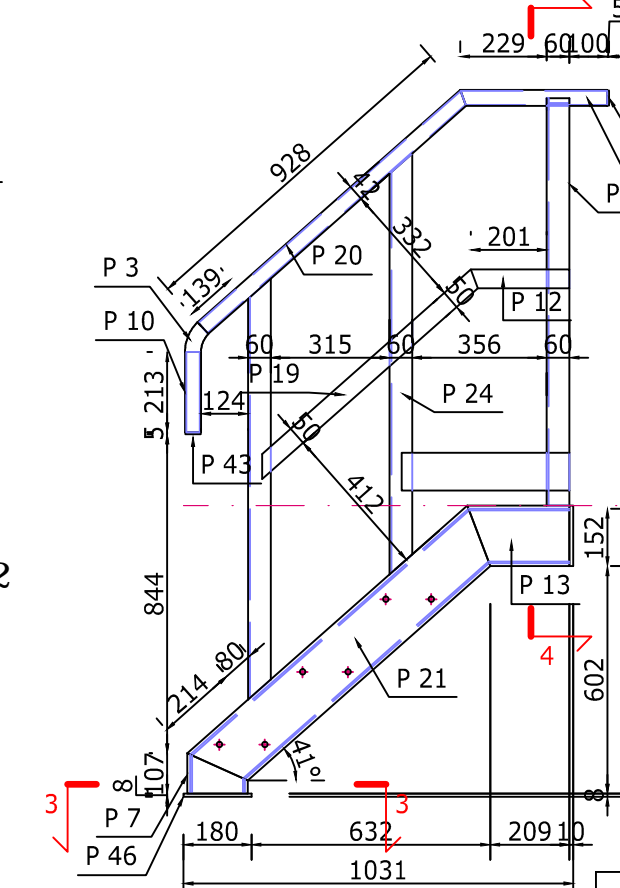
Sectiune 1-1
scara 1:10



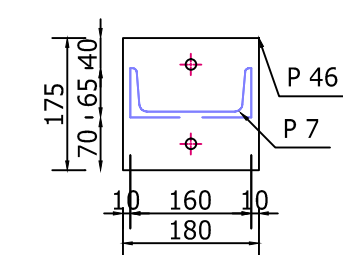
Sectiune 2-2
scara 1:10



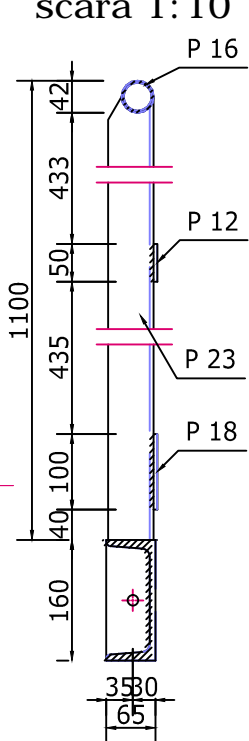
Absamblul A2 - vedere laterala
scara 1:20



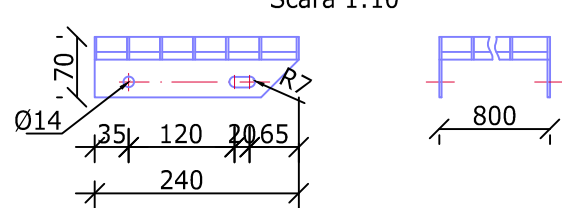
Sectiune 3-3
scara 1:10



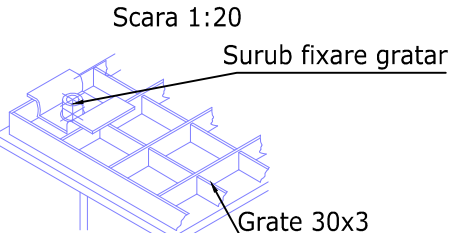
Sectiune 4-4
scara 1:10



Detaliu Treapta
Scara 1:10



Detaliu fixare gratar



Lista de materiale trepte scara					
Position	Name / Nume	Pcs. Buc.	Dimensions (mm)	Weight / Greutate	
				kg/pcs	Total
	Straitread/ Treapta	3	70 240 800	6.72	20.16
Total for 1 ladder (kg)					20.2

2



Extras de organe de asamblari							
Pozitie	Nume	Grupa	Norma Produs	Buc.	Dimensiuni (mm)	Greutate	
						kg/pcs	Total
M12	Bolt	8,8	SR EN ISO 4017:2011	12	40	0,05	0,60
	Nut	8	SR EN ISO 4032:2013	12	-	0,02	0,18
	Washer	C	SR EN ISO 7090:2002	12	-	0,005	0,06
Total							1

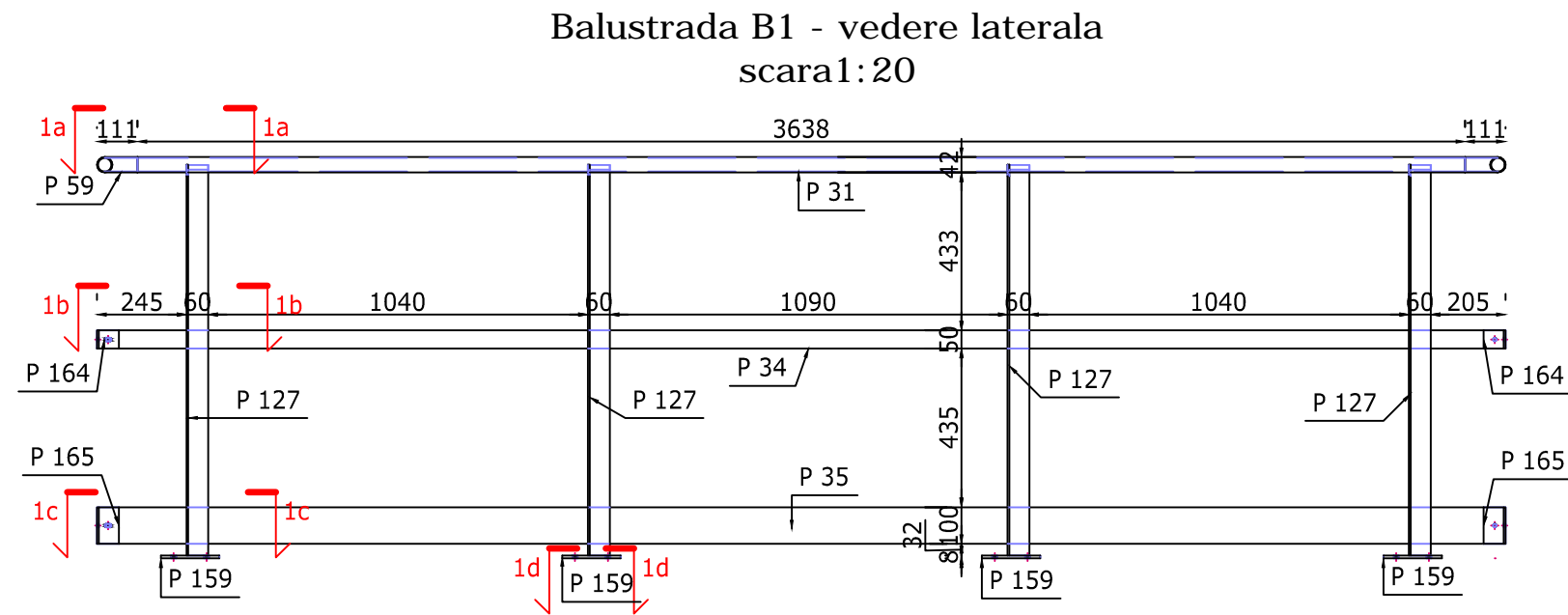
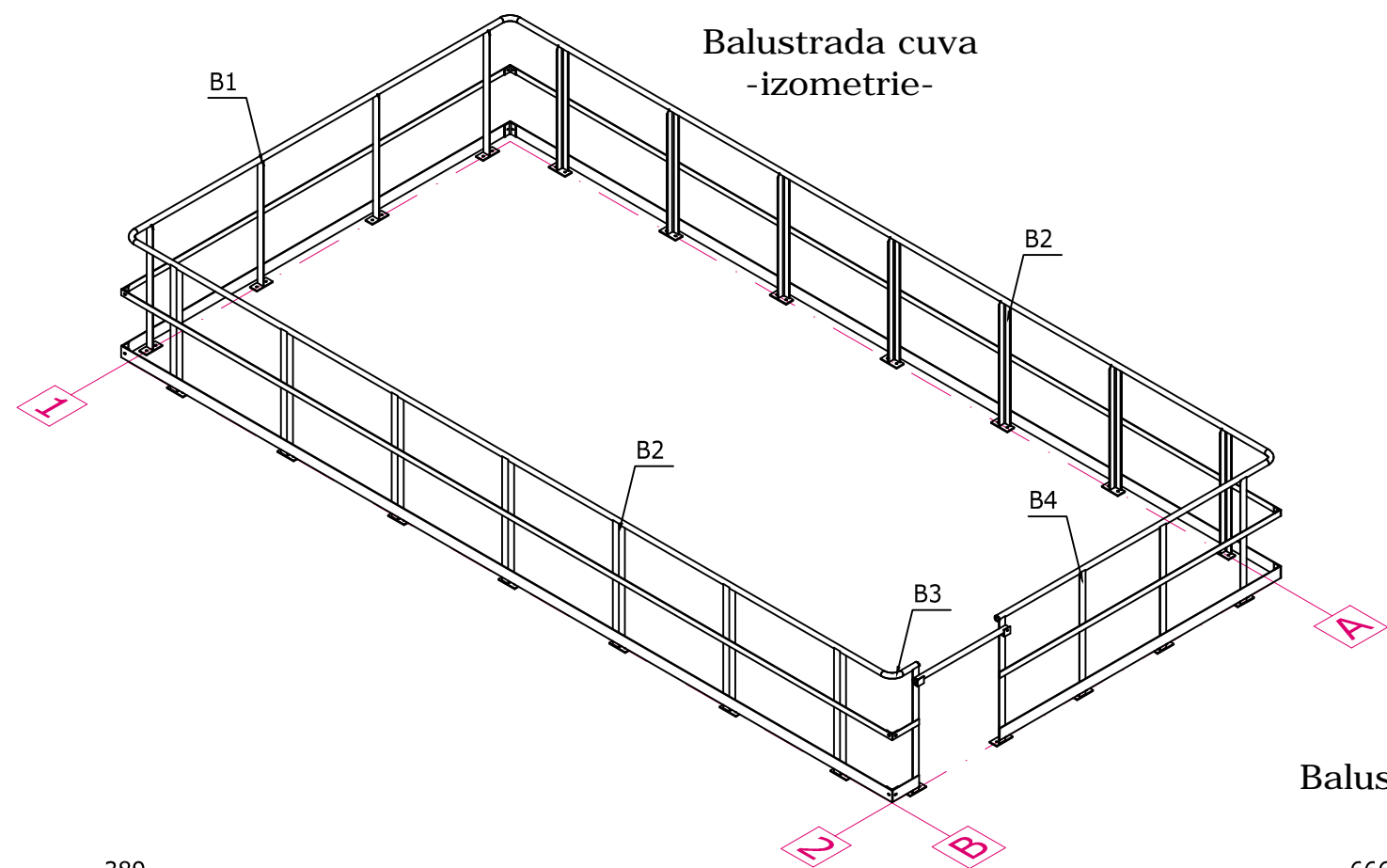
Extras de materiale scara acces								
Pos.	Nume	Material	Norma Produs	Buc.	Dimensiuni (mm)	Greutate		
						kg/pcs	kg/m	Total
P1	Plate	S235 J2	SR EN 10029:2011	1	5 40 40	0,06	-	0,06
P3	Tv Ø 48x3,2	S235 J2	SR EN 10219-2:2006	1	71	-	3,09	0,22
P6	UPN160	S235 J2	SR EN 10279-2:2002	1	107	-	18,76	2,01
P7	UPN160	S235 J2	SR EN 10279-2:2002	1	107	-	18,76	2,01
P10	Tv Ø 48x3,2	S235 J2	SR EN 10219-2:2006	1	213	-	3,09	0,66
P12	Pb 50x5	S235 J2	SR EN 10058:2004	1	261	-	1,96	0,51
P13	UPN160	S235 J2	SR EN 10279-2:2002	1	270	-	18,76	5,07
P14	UPN160	S235 J2	SR EN 10279-2:2002	1	270	-	18,76	5,07
P16	Tv Ø 48x3,2	S235 J2	SR EN 10219-2:2006	1	389	-	3,09	1,20
P18	Pb 100x5	S235 J2	SR EN 10058:2004	1	444	-	3,93	1,74
P19	Pb 50x5	S235 J2	SR EN 10058:2004	1	781	-	1,96	1,53
P20	Tv Ø 48x3,2	S235 J2	SR EN 10219-2:2006	1	927	-	3,09	2,86
P21	UPN160	S235 J2	SR EN 10279-2:2002	1	989	-	18,76	18,55
P22	UPN160	S235 J2	SR EN 10279-2:2002	1	989	-	18,76	18,55
P23	L60x50x5	S235 J2	SR EN 10056-1	1	1079	-	4,57	4,93
P24	L60x50x5	S235 J2	SR EN 10056-1	2	1114	-	4,57	10,18
P43	Plate	S235 J2	SR EN 10029:2011	1	5 40 40	0,06	-	0,06
P45	Plate	S235 J2	SR EN 10029:2011	2	10 65 180	0,92	-	1,84
P46	Plate	S235 J2	SR EN 10029:2011	2	8 175 180	1,98	-	3,96
Total (kg) - including 3% weld								83

- NOTE :**
- CATEGORIA DE IMPORTANTA "C" conform HG 766/1997;
 - CLASA DE IMPORTANTA "III" conform P100-1/2013;
 - CONSTRUCTIA ESTE AMPLASATA IN ZONA SEISMICA CU ACCELERATIA TERENULUI PENTRU PROIECTARE ag = 0.30g SI PERIOADA DE CONTROL(DE COLT) Tc = 1.6 s - conform P100 - 1/2013;
 - DOMENIUL DE VERIFICARE A2;

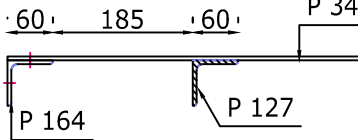
- NOTE STRUCTURI METALICE:**
- TOATE STRUCTURILE METALICE VOR FI REALIZATE DIN S 235 J2;
 - TOATE ELEMENTELE METALICE SE INCADREAZA IN CATEGORIA "B" DE EXECUTIE (CONF. STAS 767/0-88);
 - CLASA DE ACCEPTABILITATE A SUDURILOR ESTE "C" (CONF. C150-99 TABEL 5);
 - SUDURILE DE COLT NESPECIFICATE IN DESEN VOR AVEA GROSIMEA 0.7 DIN CEL MAI SUBTIRE ELEMENT IMBINAT IAR LUNGIMEA SUDURII VA FI PE TOATA SUPRAFATA DE CONTACT;
 - PROTECTIA ANTICOROZIVA : GRUNDUITA (NUMARUL TOTAL DE STRATURI 2 , AVAND GROSIMEA TOTALA 80µm) SI VOPSITA (NUMARUL DE STRATURI 3-5, AVAND GROSIMEA TOTALA 200µm).
 - CLASA DE COROZIVITATE : "C3" CONFORM CU GP 121/2013;
 - GRADUL DE PREGATIRE A SUPRAFETELOR : "Sa2.5" , "PSa2,5" CONFORM TABEL 4.2 DIN GP 121/2013.
 - SISTEM DE ACOPERIRE CU DURABILITATE MARE (H) > 15 ANI CONFORM SR EN ISO 12944-1.

- DOCUMENTE DE REFERINTA:**
- B.031.007-CS-LP-207_Plan General Amplasare - Civil

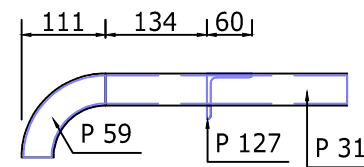
02	Emis pentru Construire	03.2020	Ing.R. Brutaru	Ing.M.Voicu
01	Emis pentru construire	03.2019	Ing. R. Brutaru	Ing. M. Scurtu
00	Prima revizie	12.2018	Ing.R. Brutaru	Ing.M. Scurtu
Rev.	Denumirea modificarii	Data	Intocmit	Verificat
 RIA ENGINEERING & CONSULTING 107065 BERTEA, SAT BERTEA, B12 100015, PLOESTI, IL CARAGIALE 49 TELEFON: +40 244 471 659 email: office@riaengineering.ro		 CONPET S.A. Str. Anul 1848, nr. 1-3, 100059, PLOESTI.		
Nr. proiect:		Desen - Nr.:		Rev.
B.031.007		CS-PLN-215		02
Beneficiar:	CONPET S.A.		Specialitate Doc.:	Format
Instalatie:	STATIE DE POMPARE POTLOGI		CIVIL	1.25-A2
Scara:	Denumire desen			Faza
1 : 20	Plan Scara Acces Cuvă de Retentie Gara de Godevil,		Pag.3/4	PT+DE



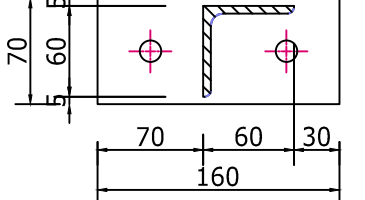
Sectioniune 1b-1b
scara 1:10



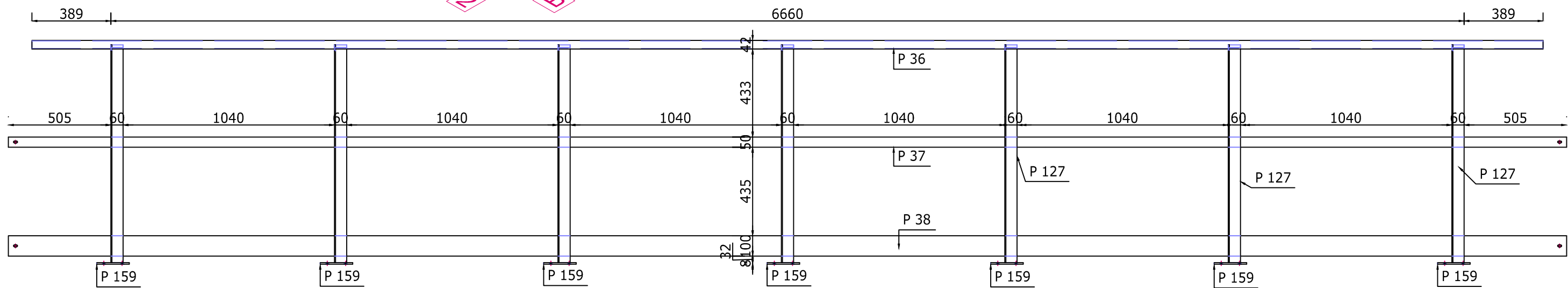
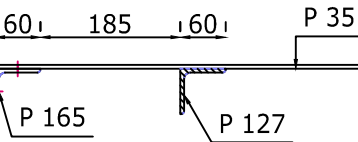
Sectioniune 1a-1a
scara 1:10



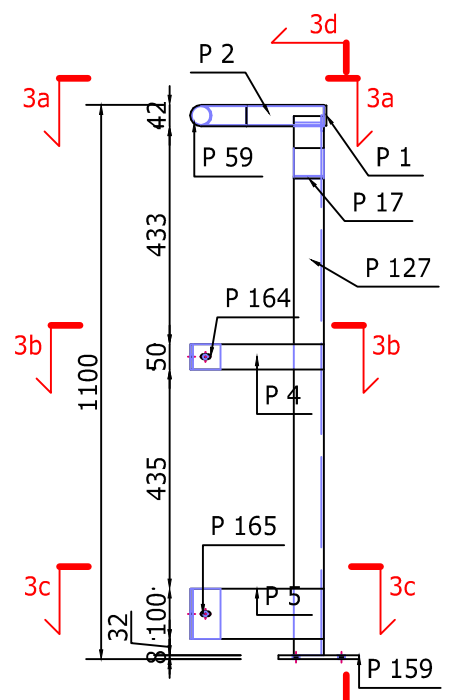
Sectioniune 1d-1d
scara 1:5



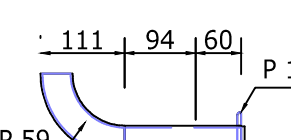
Sectioniune 1c-1c
scara 1:10



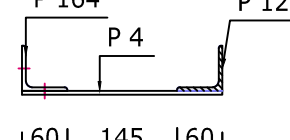
Balustrada B2 - vedere laterala
scara 1:15



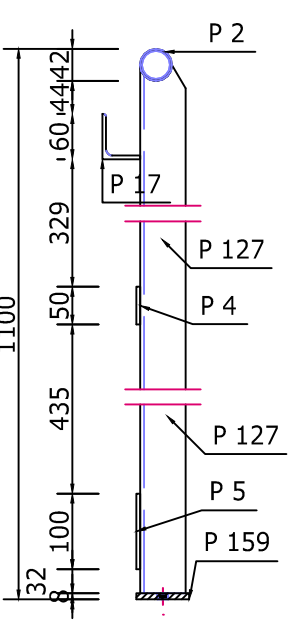
Sectioniune 3a-3a
scara 1:10



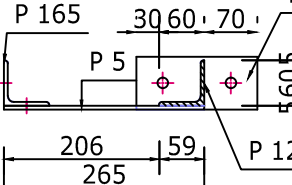
Sectioniune 3b-3b
scara 1:10



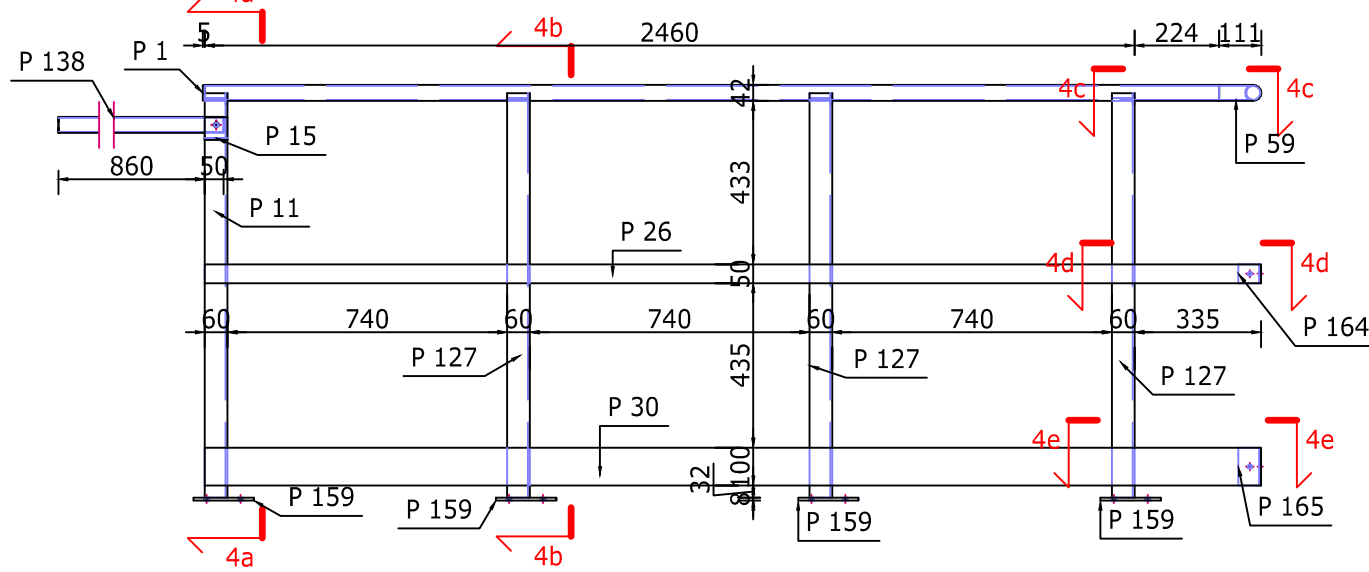
Sectioniune 3d-3d
scara 1:10



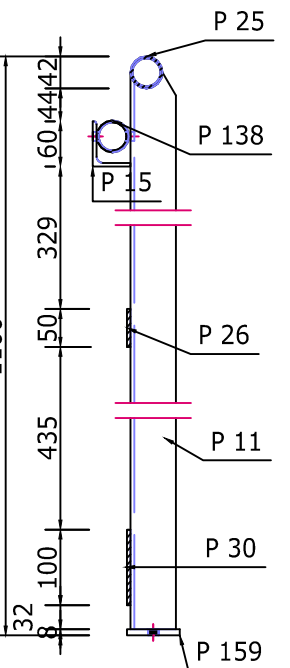
Sectioniune 3c-3c
scara 1:10



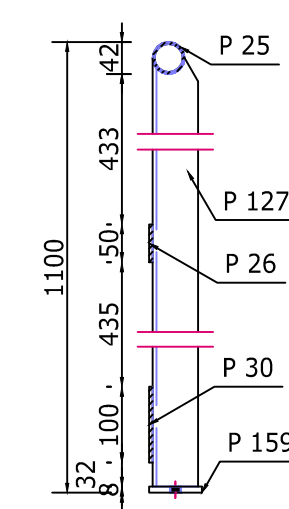
Balustrada B4 - vedere laterala
scara 1:20



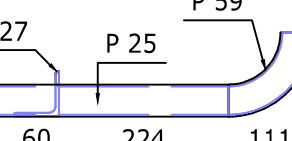
Sectioniune 4a-4a
scara 1:10



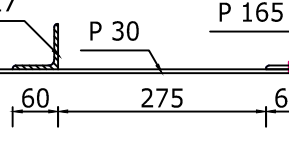
Sectioniune 4b-4b
scara 1:10



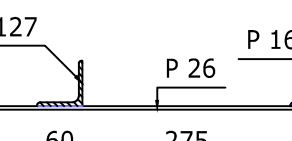
Sectioniune 4c-4c
scara 1:10



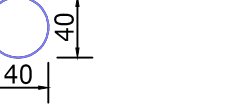
Sectioniune 4e-4e
scara 1:10



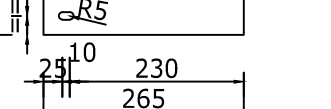
Sectioniune 4d-4d
scara 1:10



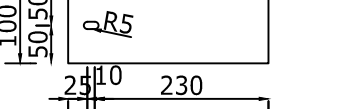
P 1: Plate 5x40x40mm
Scale: 1:5



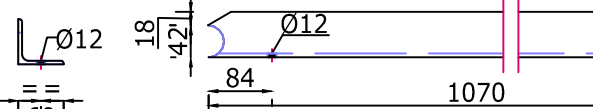
P 4: Pb 50x5-265mm
Scale: 1:10



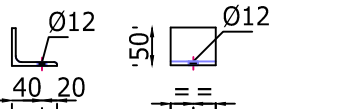
P 5: Pb 100x5-265mm
Scale: 1:10



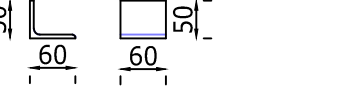
P 11: L60x60x5-1071mm
Scale: 1:10



P 15: L60x60x5-60mm
Scale: 1:10



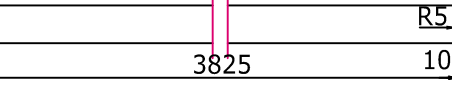
P 17: L 60x60x5-60mm
Scale: 1:10



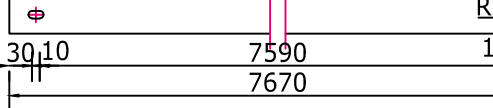
P 35: Pb 100x5-3860mm
Scale: 1:10



P 34: Pb 50x5 3860mm
Scale: 1:10



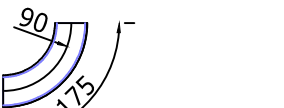
P 37: Pb 50x5 7670mm
Scale: 1:10



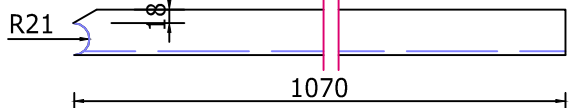
P 38: Pb 100x5-7670mm
Scale: 1:10



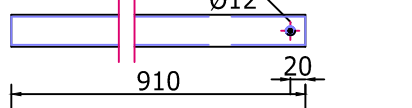
P 59: Tv Ø42x2.6-175mm
Scale: 1:10



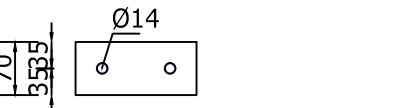
P 127: L 60x60x5-1071mm
Scale: 1:10



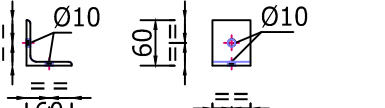
P 138: Tv Ø42x2.6-910mm
Scale: 1:10



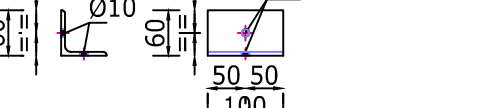
P 159: Plate 8x70x160mm
Scale: 1:10



P 164: L60x60x5-50mm
Scale: 1:10



P 165: L 60x60x5-100mm
Scale: 1:10



2

Necesar ancore mecanice :
• ancore mecanice M12x90:46buc.;

NOTE :

- CATEGORIA DE IMPORTANTA "C" conform HG 766/1997;
- CLASA DE IMPORTANTA "III" conform P100-1/2013;
- CONSTRUCTIA ESTE AMPLASATA IN ZONA SEISMICA CU ACCELERATIA TERENULUI PENTRU PROIECTARE $a_g = 0.30g$ SI PERIOADA DE CONTROL(DE COLT) $T_c = 1.6 s$ - conform P100 - 1/2013;
- DOMENIUL DE VERIFICARE A2;

NOTE STRUCTURI METALICE:

- TOATE STRUCTURILE METALICE VOR FI REALIZATE DIN S 235 J2;
- TOATE ELEMENTELE METALICE SE INCADREAZA IN CATEGORIA "B" DE EXECUTIE (CONF. STAS 767/0-88);
- CLASA DE ACCEPTABILITATE A SUDURILOR ESTE "C" (CONF. C150-99 TABEL 5);
- SUDURILE DE COLT NESPECIFICATE IN DESEN VOR AVEA GROSIMEA 0.7 DIN CEL MAI SUBTIRE ELEMENT IMBINAT IAR LUNGIMEA SUDURII VA FI PE TOATA SUPRAFATA DE CONTACT;
- PROTECTIA ANTICOROZIVA : GRUNDUITA (NUMARUL TOTAL DE STRATURI 2 , AVAND GROSIMEA TOTALA 80µm) SI VOPSITA (NUMARUL DE STRATURI 3-5, AVAND GROSIMEA TOTALA 200µm).
- CLASA DE COROZIVITATE : "C3" CONFORM CU GP 121/2013;
- GRADUL DE PREGATIRE A SUPRAFETELOR : "Sa2.5" , "PSa2.5" CONFORM TABEL 4.2 DIN GP 121/2013.
- SISTEM DE ACOPERIRE CU DURABILITATE MARE (H) > 15 ANI CONFORM SR EN ISO 12944-1.

DOCUMENTE DE REFERINTA:

- B.031.007-CS-LP-207_Plan General Amplasare - Civil

02	Emis pentru Construire	03.2020	Ing.R. Brutaru	Ing.M.Voicu
01	Emis pentru construire	03.2019	Ing. R. Brutaru	Ing. M. Scurtu
00	Prima revizie	12.2018	Ing.R. Brutaru	Ing.M. Scurtu
Rev.	Denumirea modificarii	Data	Intocmit	Verificat
	Nr. proiect:	Desen - Nr.:		Rev.
	B.031.007	CS-PLN-215		02
Beneficiar:	CONPET S.A.			Specialitate Doc.:
Instalatie:	STATIE DE POMPARE POTLOGI			Format
Scara:	Denumire desen			Faza
1 : 20	Plan Balustrada Cuva de Retentie Gara de Godevil, Pag.4/4			PT+DE